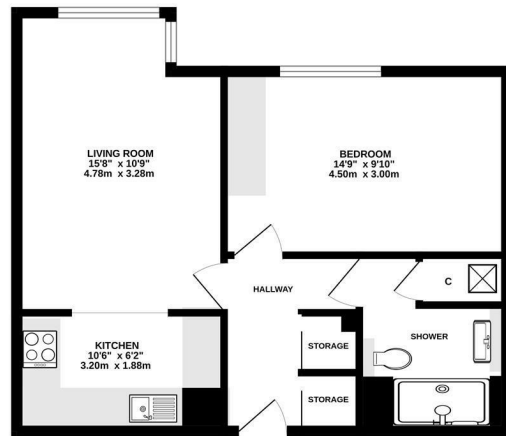




Keith
Ashton

Kings Road,
Brentwood

FIRST FLOOR
492 sq.ft. (45.7 sq.m.) approx.



TOTAL FLOOR AREA: 492 sq.ft. (45.7 sq.m.) approx.
Measurements are approximate. Not to scale. Residents please verify.
Made with Mergin 3D/2D



3 Primrose Court Kings Road, Brentwood, CM14 4YZ

A well-presented one-bedroom retirement apartment situated within easy walking distance of Brentwood's mainline railway station and town centre, with its wide range of shops, cafés and amenities. The doctor's surgery is also close by, offering added convenience.

The apartment features a spacious lounge, double bedroom, shower room, and an entrance hallway with storage. It also benefits from a larger-than-average kitchen for this development, along with double-glazed windows.

Residents enjoy excellent communal facilities, including a generous lounge with kitchen area, a laundry room, and a visitors' guest suite available for short stays at a nominal charge. Externally, there are well-maintained communal gardens and residents' parking.



Energy Efficiency Rating			Environmental Impact (CO ₂) Rating		
Very energy efficient - lower running costs	Current	Potential	Very environmentally friendly - lower CO ₂ emissions	Current	Potential
(81-91) A			(81-91) A		
(69-80) B			(69-80) B		
(55-68) C			(55-68) C		
(39-54) D			(39-54) D		
(21-38) E			(21-38) E		
(11-20) F			(11-20) F		
(1-10) G			(1-10) G		
Not energy efficient - higher running costs			Not environmentally friendly - higher CO ₂ emissions		
England & Wales EU Directive 2002/91/EC			England & Wales EU Directive 2002/91/EC		

SERVICES:

Local Authority: Brentwood
Council tax band: B
Post code: CM14 4YZ

VIEWING:

Strictly by prior arrangement with Keith Ashton Estate Agents

£120,000

OPENING HOURS:

Monday to Friday: 8.45AM - 6.30PM | Saturdays: 9AM - 5.30PM | Sundays: 10AM - 2PM

MORTGAGE INFORMATION: We offer the additional facility of an in-house Independent Financial Adviser who will access all mortgage lenders with the purpose of providing you with the benefit of choice. For quotations or comparables please call 01277 260858 or visit our interactive website at www.mortgagebusiness.net



We the Agent have not tested any apparatus, fittings or services for this property. The plot size is intended merely as a guide and has not been officially measured or verified by the Agent. Photographs are for illustration only and may depict items which are not for sale or included in the sale of the property. As part of the service we offer we may recommend ancillary services to you which we believe may help you with your property transaction. We wish to make you aware, that should you decide to use these services we will receive a referral fee. For full and detailed information please visit 'terms and conditions' on our website www.keithashton.co.uk

Brentwood
Tel. 01277 260858

Village Office
Tel. 01277 375757

Lettings Office
Tel. 01277 202200

Explore more @ www.keithashton.co.uk

